

2 Phase hybride stappenmotor / 2 Phase hybride steppermotor

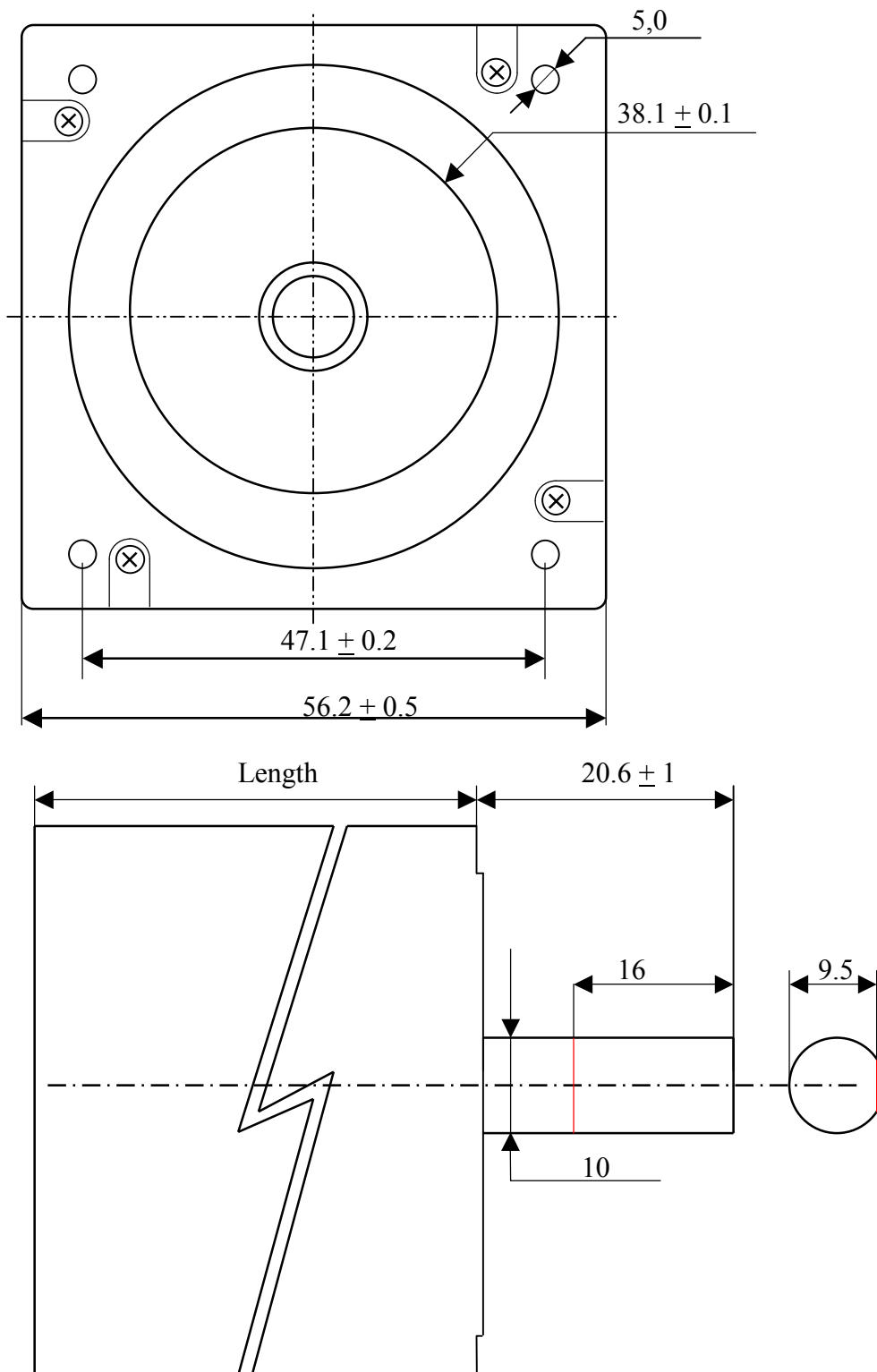
Moteur hybride pas à pas 2 phases / 2 Phase hybride Schrittmotor

Size 23 F Series

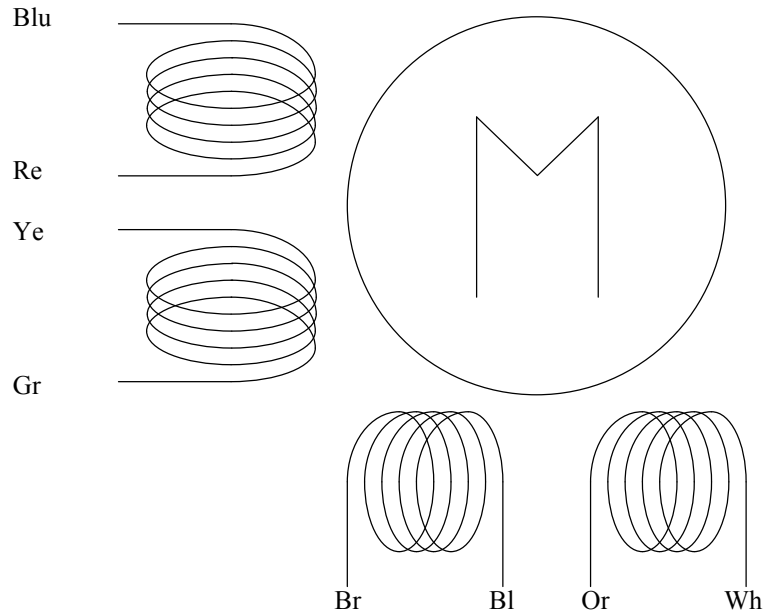
Step Angle : 1.8 Degree
 Positional Accuracy : 5%
 Number of phases : 2
 Temperature rise : 80 degree max.
 Dielectric strength : 500 Vdc
 Insulation resistance : 100 Mohm (500 Vdc)
 Insulation class : B
 Radial play : 0.025 mm (450 g load)

	N	A	Ohm	V	mH	gcm2	Kg	mm
23SM056-028-8W-F-1.3	1.3	1.4	1.4	1.96	2.5	300	0.71	56
23SM080-028-8W-F-1.7	1.7	1.4	2.3	3.2	4.5	480	1.2	80

N (Nm)	= Koppel	= Torque	= Haltemoment	= couple
A (Ampere)	= Stroom / spoel	= Current / coil	= Strom / spule	= le courant / bobine
Ohm (Ohm)	= Weerstand / spoel	= Resistance / coil	= wiederstand / spule	= resistance / bobine
V (Volt)	= Spanning / spoel	= Voltage / coil	= spannung / spule	= tension / bobine
MH (mH)	= Zelfinductie / spoel	= Selfinduction / coil	= Selfinduction / spule	= l'inductance / bobine
Gcm2 (Gcm2)	= Rotor inertia	= Rotor inertia	= Rotor inertia	= le inertia de rotor
Kg (Kg)	= Gewicht van motor	= Weight of steppermotor	= Motorgewicht	= le poids de moteur
Mm (mm)	= Lengte van motor	= Length of steppermotor	= Motor länge	= la longueur de moteur



Draden / wires / leitungen / fils



Blu	= Blauw	= Blue	= Blau	= Bleu
Re	= Rood	= Red	= Rot	= Rouge
Ye	= Geel	= Yellow	= Gelb	= Jaune
Gr	= Groen	= Green	= Grün	= Vert
Br	= Bruin	= Braun	= Braun	= Brun
Bl	= Zwart	= Black	= Zwart	= Noir
Or	= Oranje	= Orange	= Orange	= Orange
Wh	= Wit	= White	= Weiss	= Blanc

Aansluitingen / Wiring / Anslusse / Les raccordements

Bipolair Parallel :	Motor	Driver
	Blu + Ye Re + Gr	→ A+ A-
	Br + Or Bl + Wh	→ B+ B-
Maximum torque	= maximum torque	
Maximum current	= 2 * Current / coil	
Self induction	= Induction / coil	

Bipolair Serieel :	Motor	Driver
	Blu Re + Ye Gr	→ A+ A-
	Br Bl + Or Wh	→ B+ B-
Maximum torque	= maximum torque	
Maximum current	= Current / coil	
Self induction	= 4 * Induction / coil	

Unipolair :	Motor	Driver
	Blu Re + Ye Gr	→ A+ + V A-
	Br Bl + Or Wh	→ B+ +V B-
Maximum torque	= maximum torque / 1.4	
Maximum current	= 1.4 * Current / coil	
Self induction	= Induction / coil	